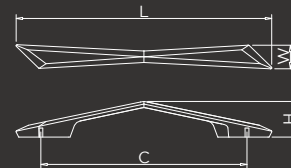


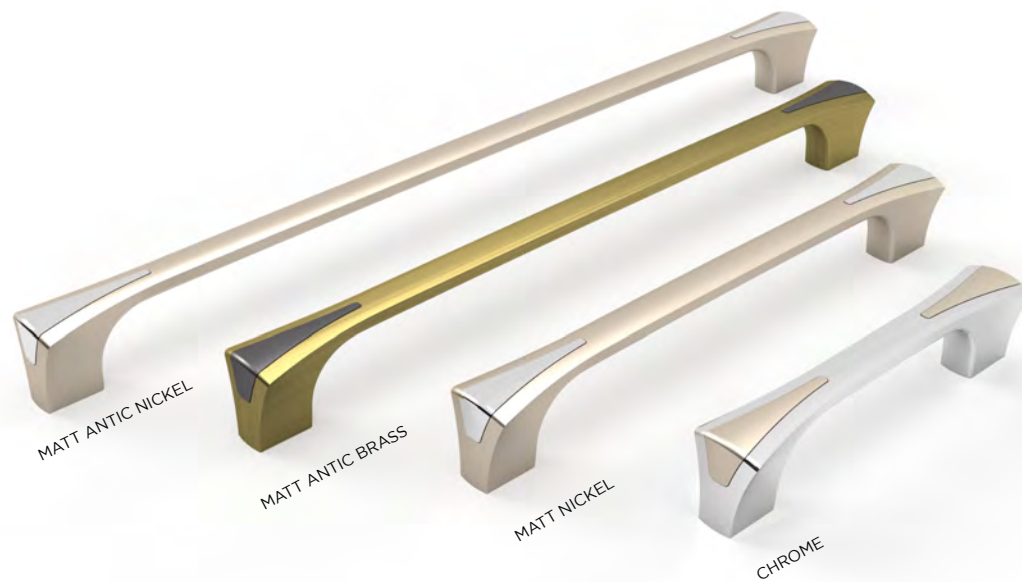
AVAILABLE IN MATT ANTIQUE BRASS

CABINET HANDLE
X1

TECHNICAL DIAGRAM



C	L	W	H
96MM	133	18	27
160MM	198	18	28
224MM	263	18	30
288MM	328	18	32



AVAILABLE IN MATT ANTIQUE BRASS

CABINET HANDLE
3+
TECHNICAL DIAGRAM


C	L	W	H
96MM	114	19.5	26
160MM	178	19.5	26
224MM	242	19.5	27
288MM	306	19.5	27

italica®



AVAILABLE IN CROME FINISH

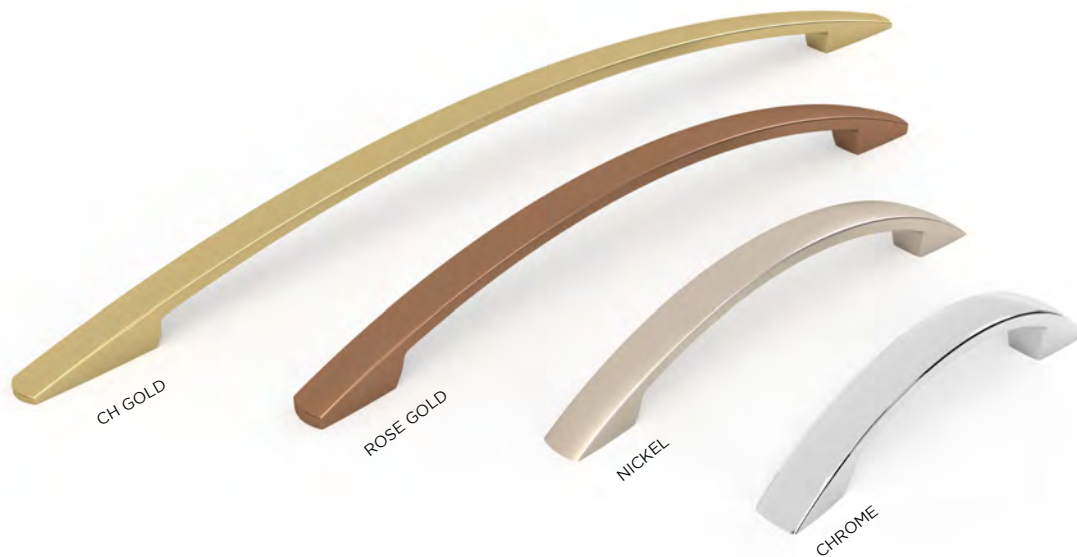
CABINET HANDLE

D

TECHNICAL DIAGRAM



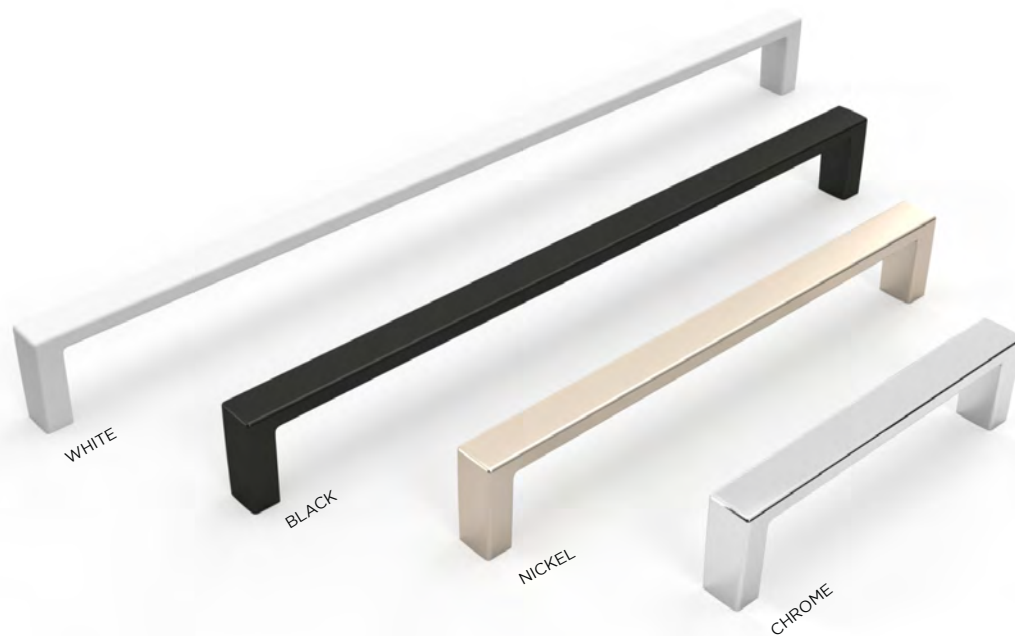
C	L	W	H
96MM	103	15	24.5
160MM	167	15	25.5
224MM	231	15	26.5
288MM	295	15	27.5



AVAILABLE IN CROME FINISH

CABINET HANDLE
NEW C
TECHNICAL DIAGRAM


C	L	W	H
96MM	116	12	26
128MM	154	12	27
192MM	230	12	31
256MM	302	12	31

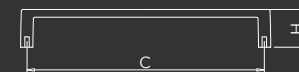


AVAILABLE IN MATT BLACK

CABINET HANDLE

OK

TECHNICAL DIAGRAM



C	L	W	H
96MM	105	12	25
160MM	169	12	25
224MM	233	12	25
288MM	297	12	25
416MM	425	12	25

italica®

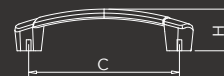


AVAILABLE IN NICKLE FINISH

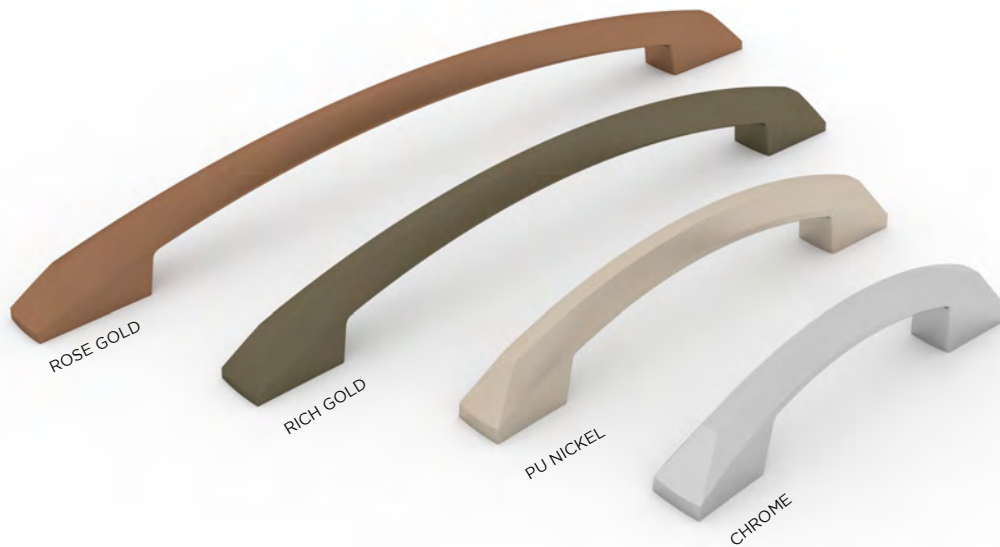
CABINET HANDLE

AA

TECHNICAL DIAGRAM



C	L	W	H
64MM	82	16	26.5
96MM	114	16	26.5
128MM	146	16	26.5
192MM	207	16	27
300MM	330	19	28.5
450MM	480	23.5	28.5



AVAILABLE IN PU NICKLE FINISH

CABINET HANDLE

VI

TECHNICAL DIAGRAM

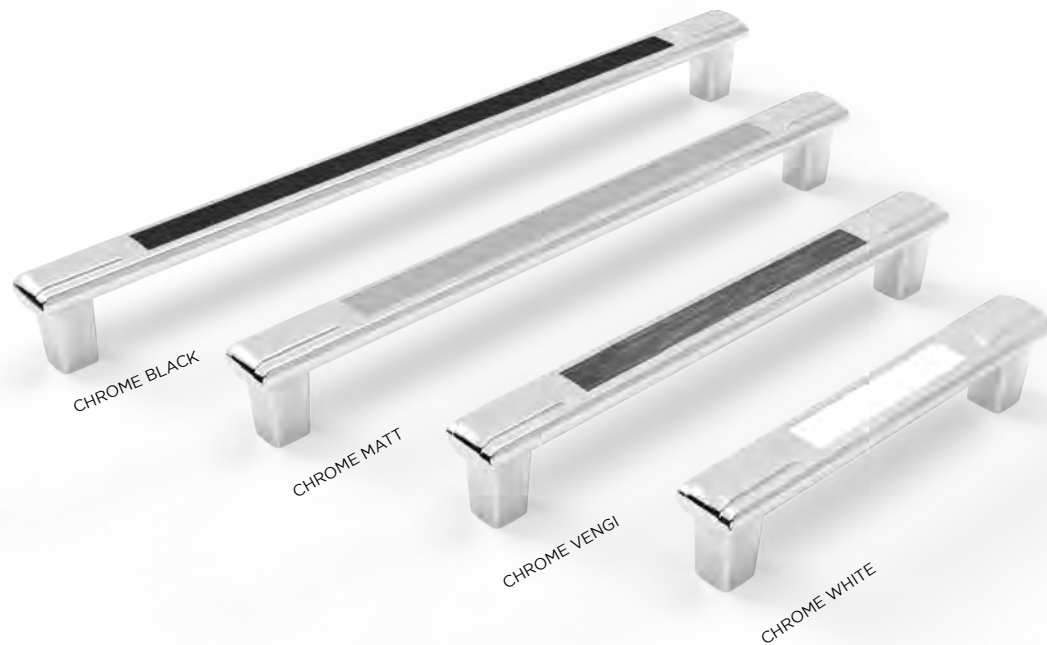


C	L	W	H
96MM	117	16	29
128MM	149	16	30
192MM	213	16	32
300MM	321	16	32
450MM	475	16	34

FINISH AVAILABLE

SS CHROME

italica[®]



AVAILABLE IN CROME MATT FINISH

CABINET HANDLE

SM

TECHNICAL DIAGRAM



C	L	W	H
96MM	114	16	26
160MM	178	16	26
224MM	242	16	26
288MM	306	16	26

FINISH AVAILABLE

CHROME MATT

CHROME VENGI

CHROME WHITE

CHROME BLACK

PU NICKEL VENGI

PU NICKEL WHITE

italica®

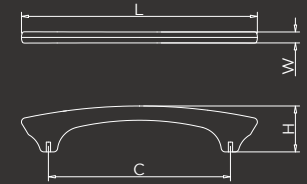


AVAILBLE IN MATT NICKLE FINISH

CABINET HANDLE

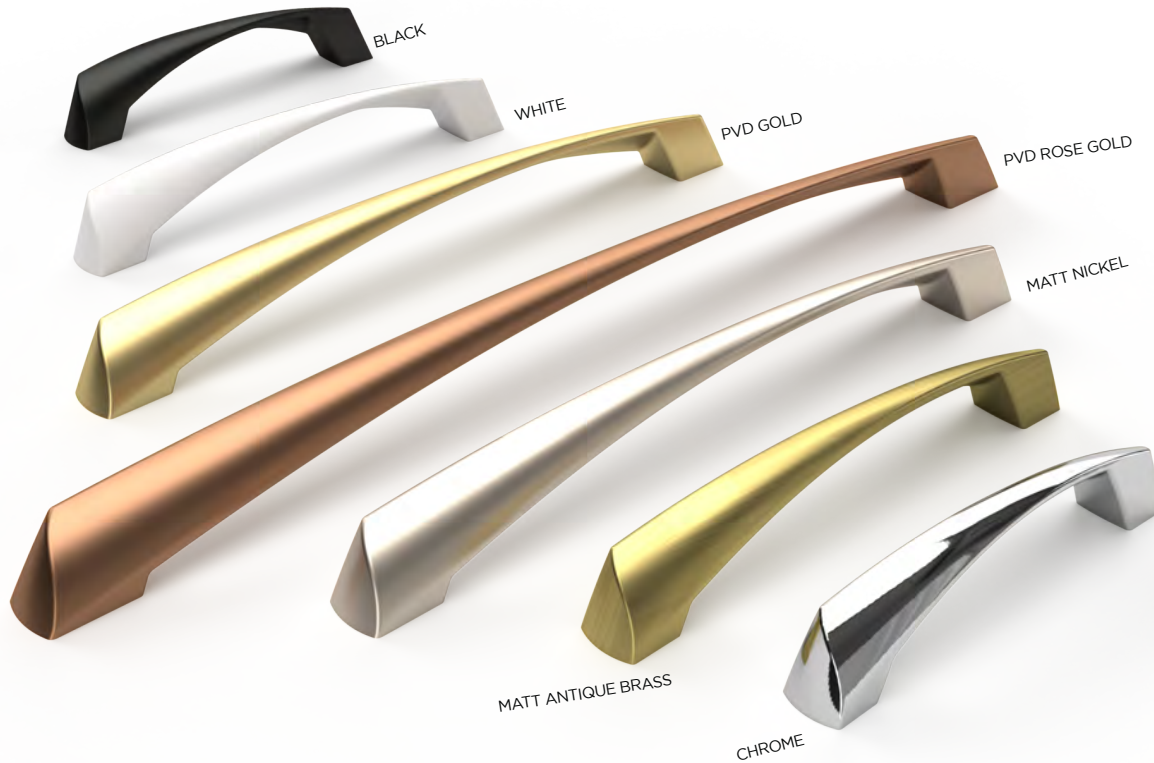
HL

TECHNICAL DIAGRAM



C	L	W	H
96MM	133	08	31
128MM	168	08	33
192MM	233	08	34
288MM	330	08	35

italica®



AVAILABLE IN PVD GOLD FINISH

CABINET HANDLE

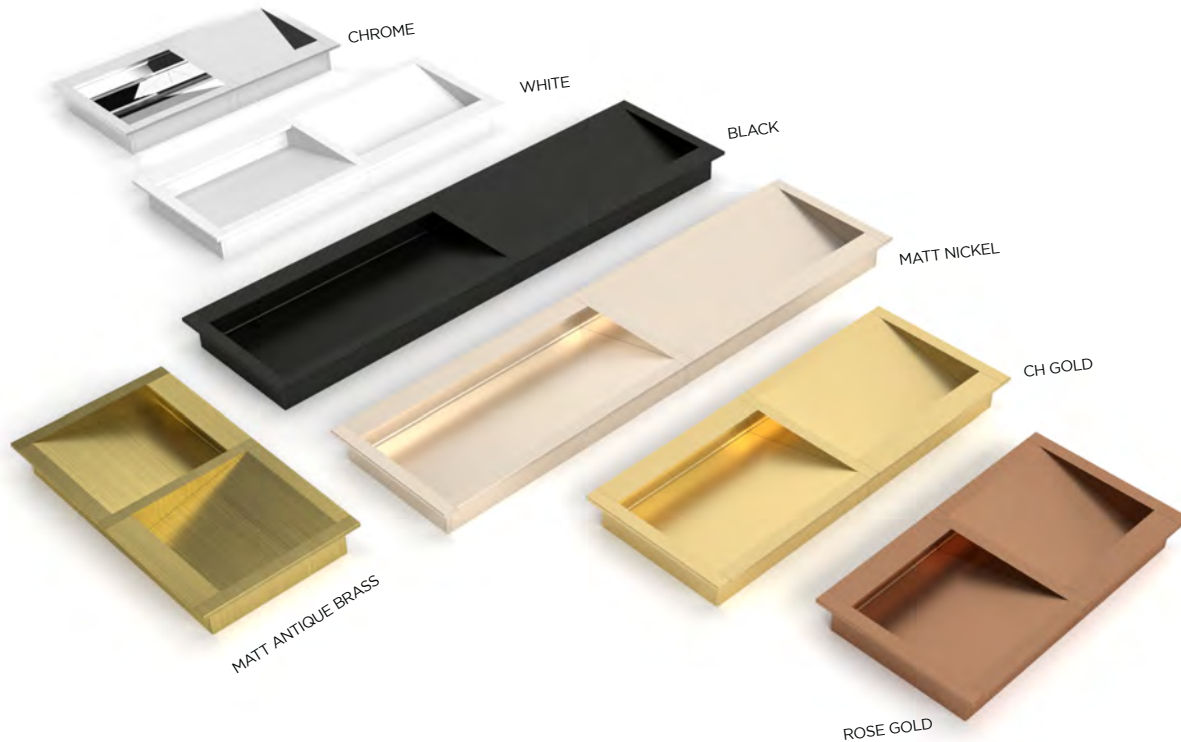
AK

TECHNICAL DIAGRAM



C	L	W	H
96 MM	112	15.5	24.5
128 MM	146	16.5	25
192 MM	214	17.5	26
288 MM	315	18.5	28

italica®

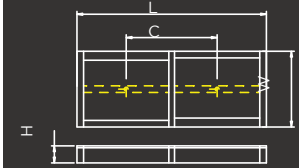


CONCEALED HANDLE

2CW

TECHNICAL DIAGRAM

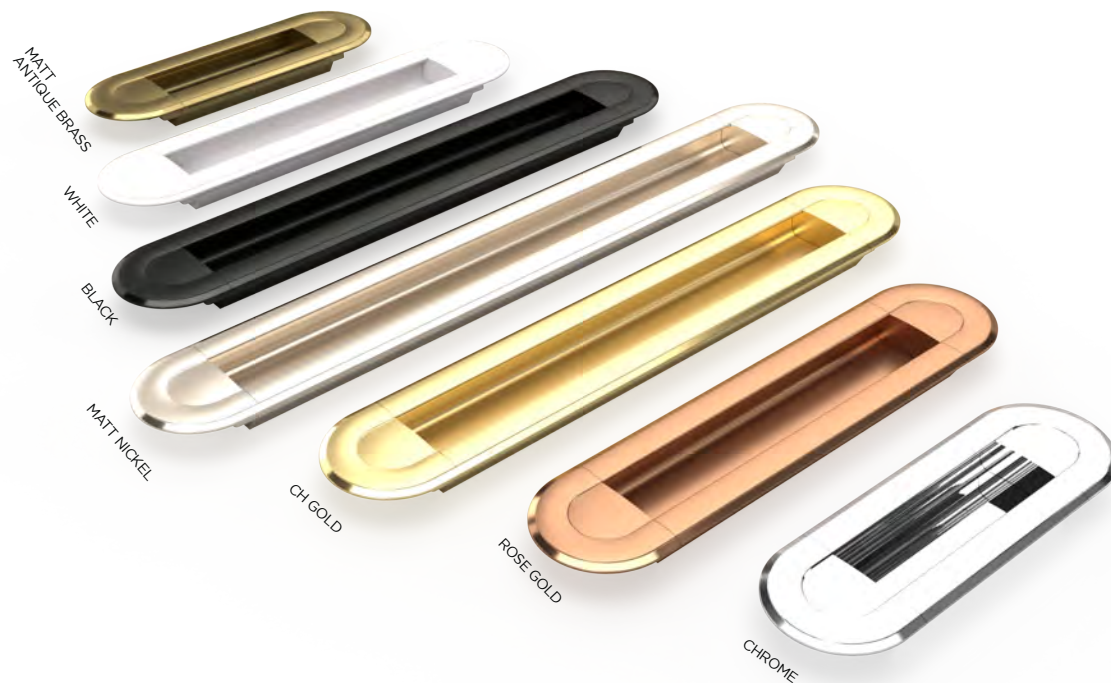
CONCEALED HANDLE



C	L	W	H
128 MM	152	80	18
160 MM	200	80	18
256 MM	304	80	18

AVAILABLE IN MATT ANTIQUE / MATT NICKLE / ROSE GOLD

italica®

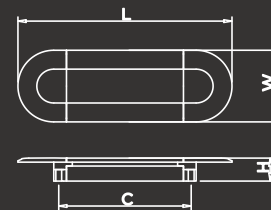


CONCEALED HANDLE

CRR

TECHNICAL DIAGRAM

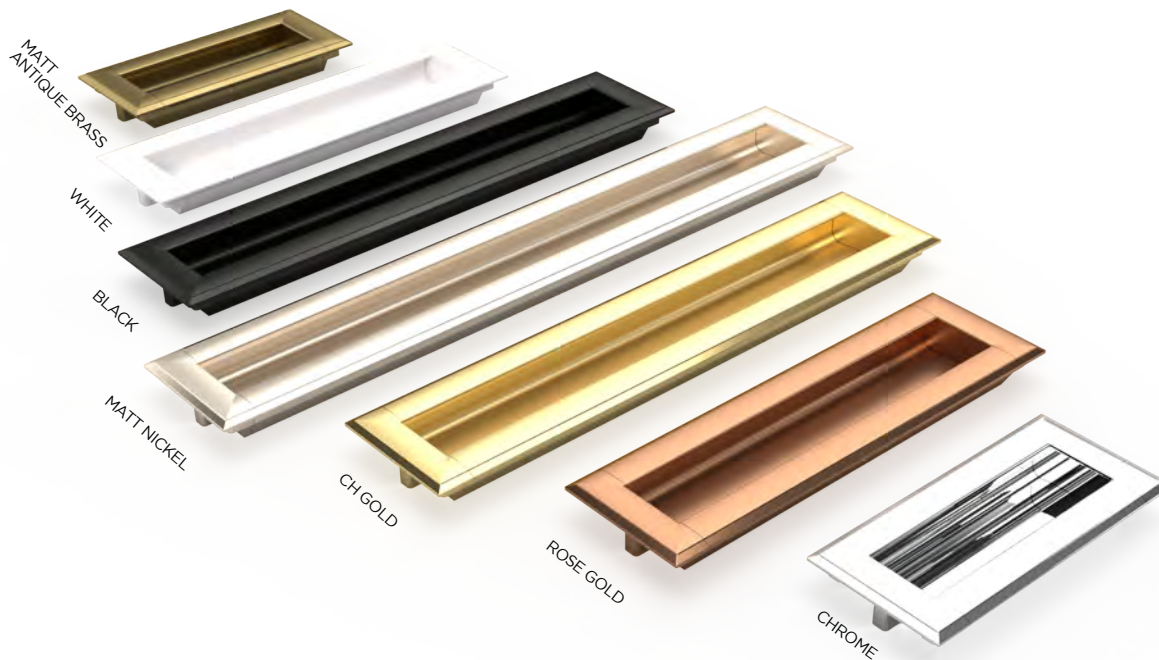
CONCEALED HANDLE



C	L	W	H
96 MM	156	52	16
160 MM	220	52	16
224 MM	284	52	16
288 MM	348	52	16

AVAILABLE IN MATT ANTIQUE BRASS / MATT NICKLE / ROSE GOLD

italica[®]



CONCEALED HANDLE

CSK

TECHNICAL DIAGRAM

CONCEALED HANDLE

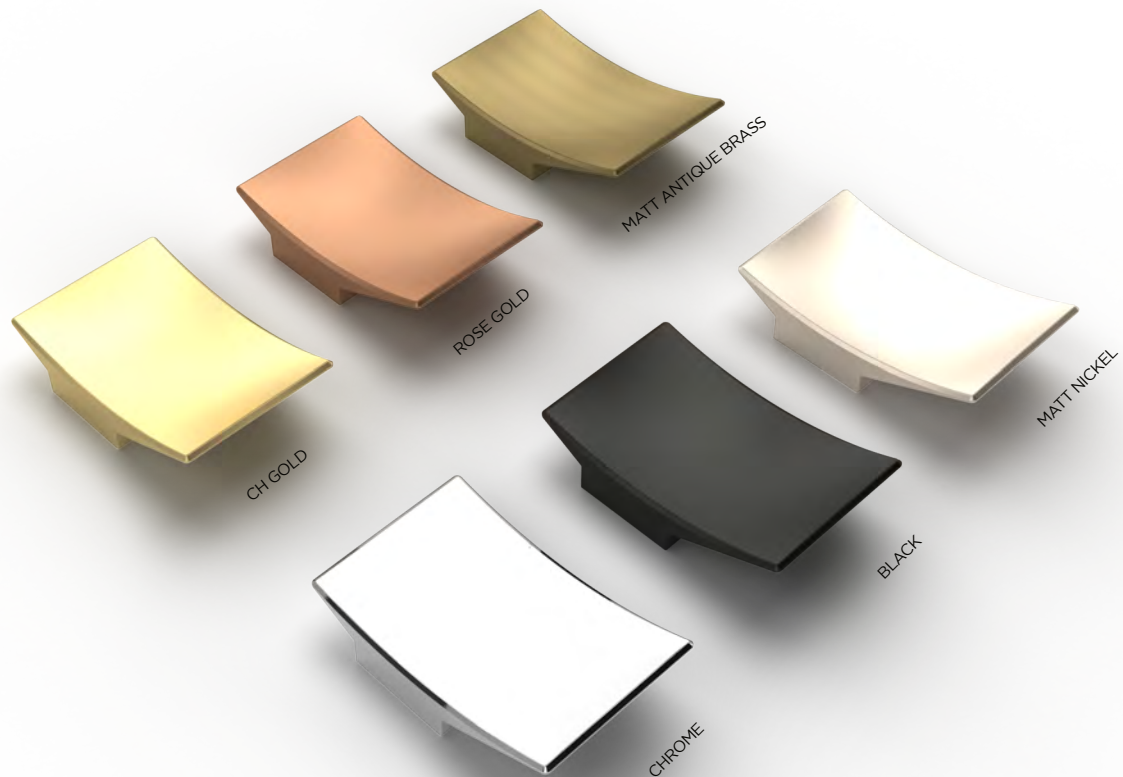


C	L	W	H
96 MM	112	52	16
160 MM	176	52	16
224 MM	240	52	16
288 MM	304	52	16

FINISH AVAILABLE

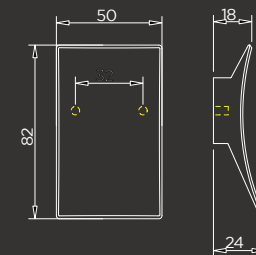
BLACK
WHITE
CH GOLD
ROSE GOLD
MATT ANTIC BRASS
MATT NICKEL

AVAILABLE IN MATT ANTIQUE BRASS / MATT NICKLE / ROSE GOLD



HANOB U80

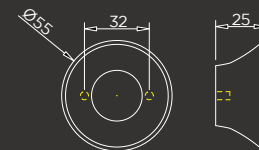
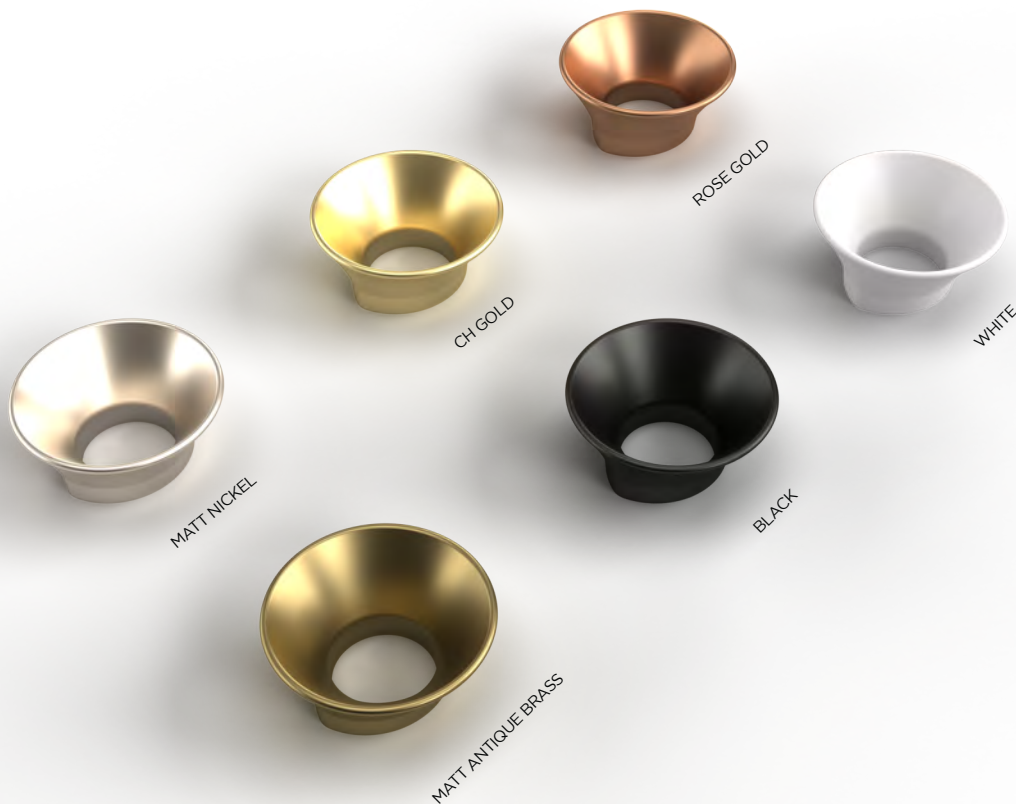
TECHNICAL DIAGRAM



AVAILABLE IN CHAMPANGE GOLD / MATT NICKLE / ROSE GOLD

HANOB R55

TECHNICAL DIAGRAM



AVAILABLE IN CHAMPANGE GOLD / MATT NICKLE / ROSE GOLD



MATT ANTIQUE BRASS



CH GOLD



MATT NICKLE



WHITE



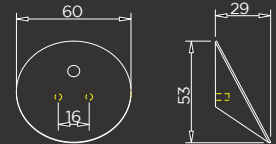
BLACK



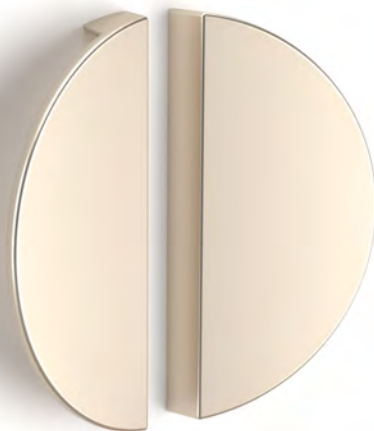
ROSE GOLD

HANOB O60

TECHNICAL DIAGRAM



AVAILABLE IN CHAMPANGE GOLD / MATT NICKLE / ROSE GOLD



MATT NICKEL



CH GOLD



ROSE GOLD



MATT ANTIQUE BRASS



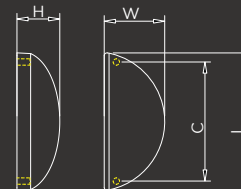
WHITE



BLACK

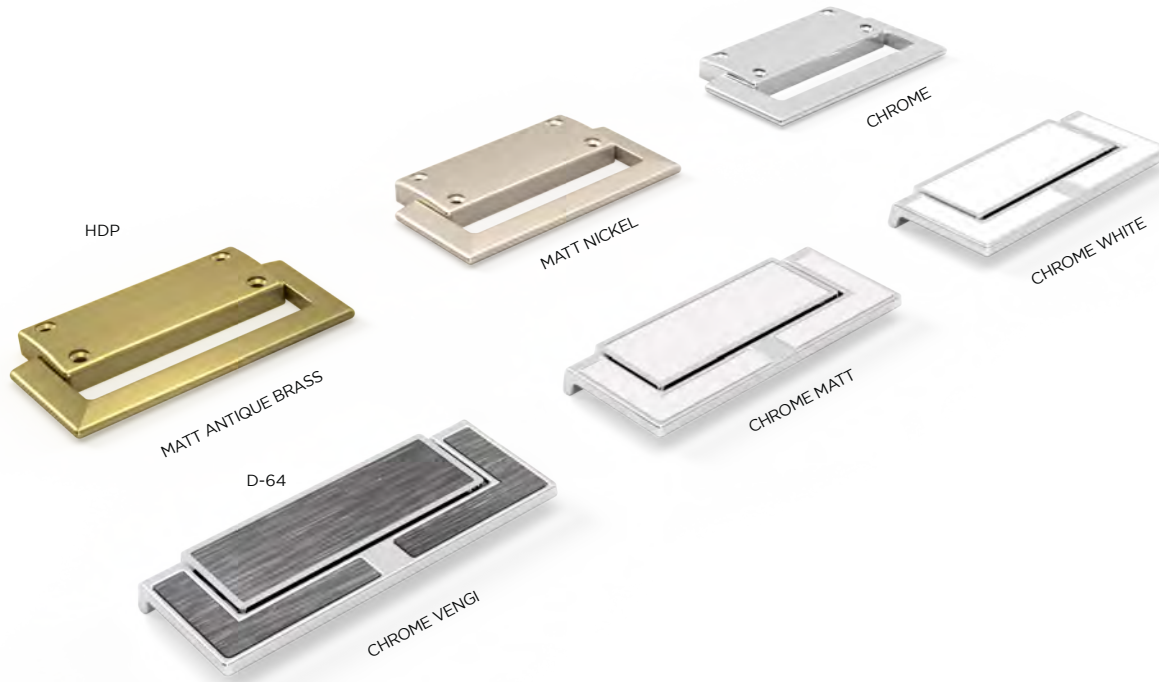
HANOB G

TECHNICAL DIAGRAM



C	L	W	H
64 MM	74	33	23
128 MM	139	65	34

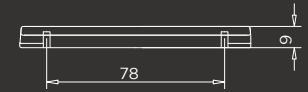
AVAILABLE IN CHAMPANGE GOLD / MATT NICKLE / ROSE GOLD / BLACK/ WHITE



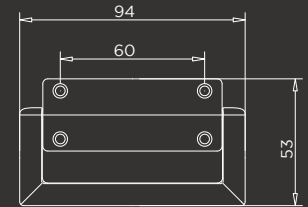
DRAWER PULL

D 64 & HDP

TECHNICAL DIAGRAM



HDP



D 64

AVAILABLE IN MATT ANTIQUE BRASS / MATT NICKLE / CROME



CH GOLD

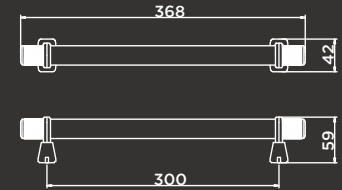
AVAILABLE IN CHAMPANGE GOLD

GLASS DOOR HANDLE

BRG

TECHNICAL DIAGRAM

GLASS DOOR HANDLE



C	L	W	H
300 MM	368	42	59
450 MM	518	42	59
600 MM	668	42	59

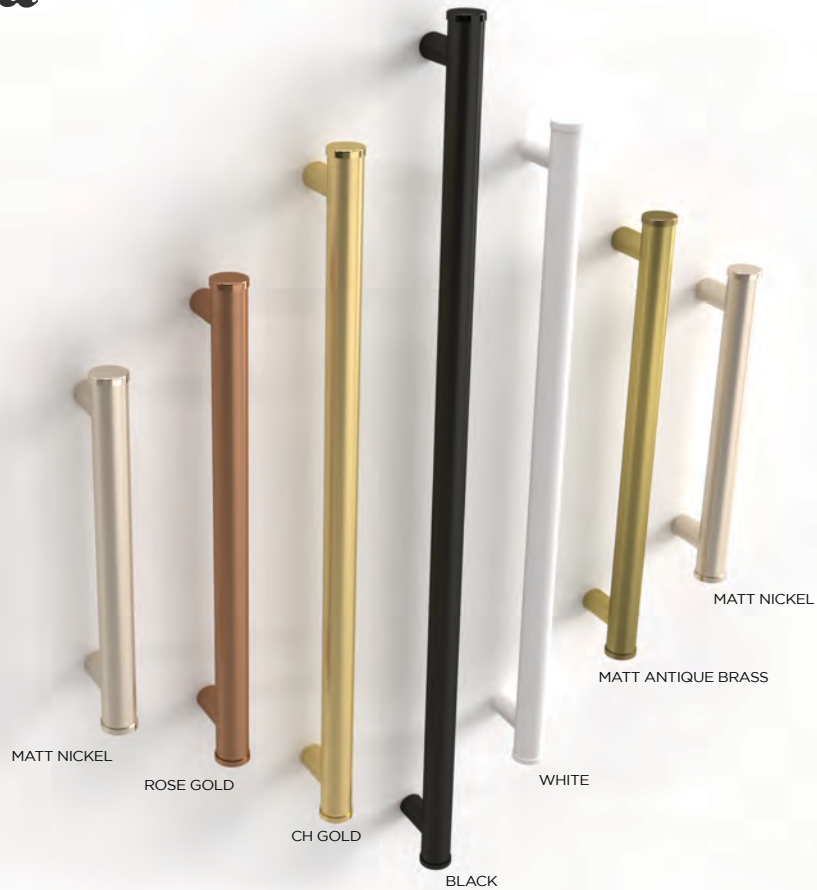
FINISH AVAILABLE

MATT NICKEL

CH GOLD

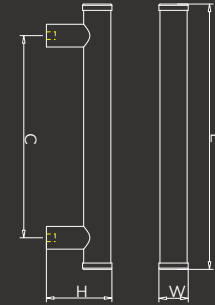
ROSE GOLD

SS MATT NICKEL



22HP

GLASS DOOR HANDLE



C	L	W	H
200 MM	257	22	52
300 MM	357	22	52
450 MM	507	22	52
600 MM	657	22	52

AVAILABLE IN MATT ANTIQUE / ROSE GOLD / BLACK



27 SQG
SS CHROME
ROSE GOLD

AVAILABLE IN SS CROME / ROSE GOLD

GLASS DOOR HANDLE

18 TS, 27 SQG, DD G

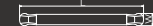
TECHNICAL DIAGRAM

18TS



C	L	W	H
150 MM	196	18	48
200 MM	246	18	48
250 MM	296	18	48
300 MM	346	18	48

27 SQG



C	L	W	H
200 MM	224	32	53
250 MM	274	32	53
300 MM	324	32	53
450 MM	474	32	53
600 MM	624	32	53

DD G



C	L	W	H
200 MM	220	27	53
250 MM	270	27	53
300 MM	320	27	53
450 MM	470	27	53
600 MM	620	27	53

italica®



MATGLO G
SS CHROME

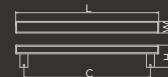
AVAILABLE IN SS CROME

GLASS DOOR HANDLE

MATGLOW G, 32 H, 18-DS

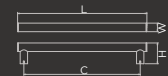
TECHNICAL DIAGRAM

MATGLOW G



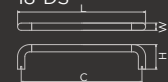
C	L	W	H
200 MM	239	27	52
250 MM	289	27	52
300 MM	339	27	52
450 MM	489	27	52
600 MM	639	27	52

32 H



C	L	W	H
300 MM	333	22	54
450 MM	483	22	54
600 MM	633	22	54
750 MM	783	22	54
900 MM	933	22	54
1200MM	1233	22	54
1500MM	1533	22	54

18-DS



C	L	W	H
200 MM	218	18	61
250 MM	268	18	61
300 MM	318	18	61
450 MM	468	18	61
600 MM	618	18	61

italica®

AVAILABLE IN SS CROME



32 ECO
SS CHROME



22 ECO
SS CHROME

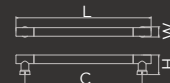


GLASS DOOR HANDLE

22 TS, 32 ECO, 22ECO

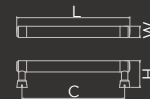
TECHNICAL DIAGRAM

22 TS



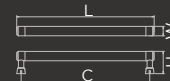
C	L	W	H
200 MM	246	26	50
250 MM	296	26	50
300 MM	346	26	50
450 MM	496	26	50
600 MM	646	26	50

32 ECO



C	L	W	H
300 MM	331	33	78
450 MM	481	33	78
600 MM	631	33	78
900 MM	931	33	78
1200MM	1231	33	78

22 ECO



C	L	W	H
150 MM	170	22	52
200 MM	220	22	52
250 MM	270	22	52
300 MM	320	22	52